

IKON HOMES



DESIGNED TO IMPRESS
BUILT TO ENDURE



WHY BUILD WITH IKON HOMES?

Ikon Homes is the family company that builds for families. We pride ourselves on our welcoming culture, attention to detail, and understanding of the market we operate in.

Proudly New Zealand owned and operated, family is the heart and soul of our business. Our homes are designed to impress and built to endure, with designs to suit all tastes, budgets and dreams.

Building your own home is an adventure like no other and Ikon Homes is committed to making the whole process seamless.

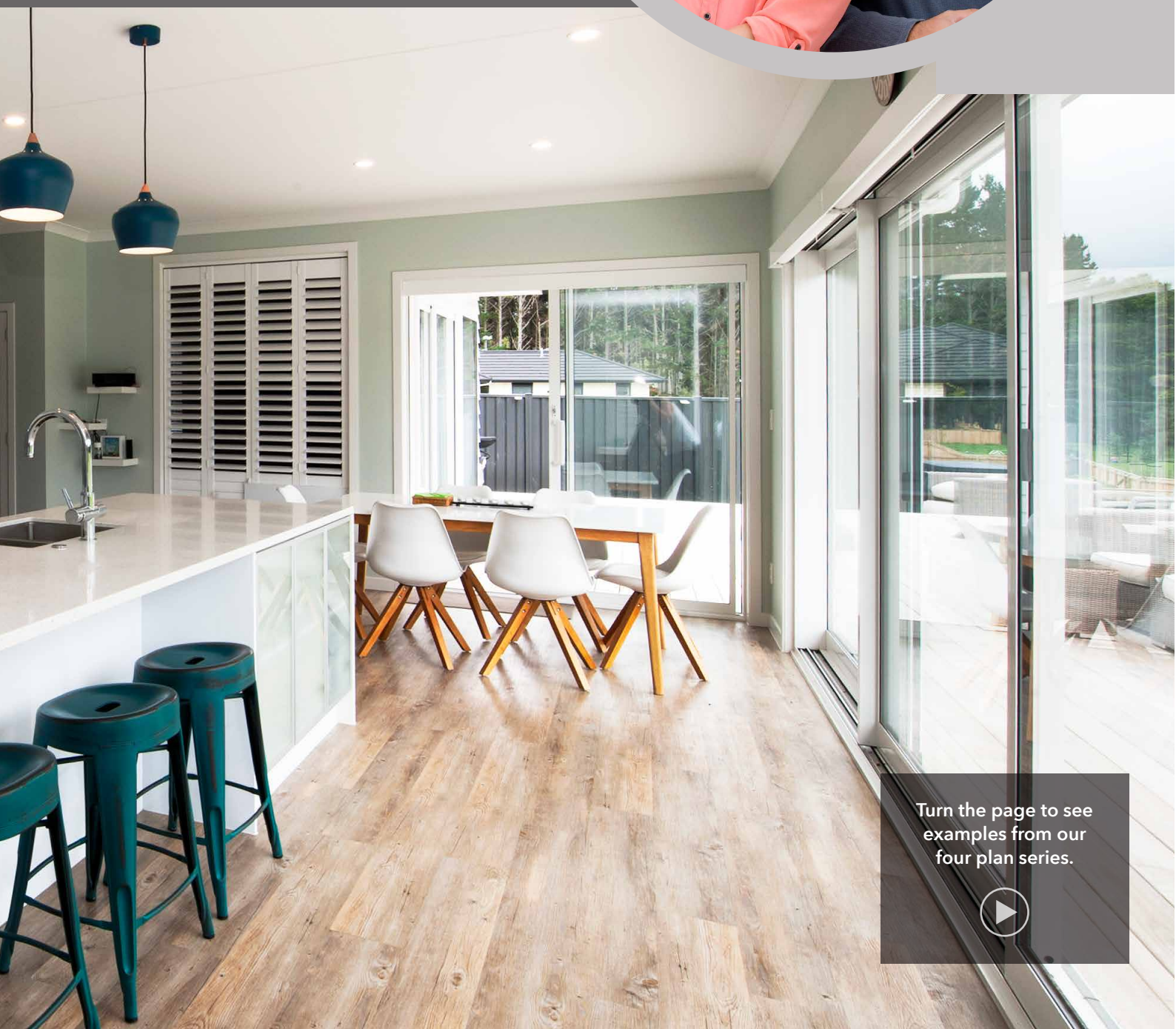
We are here to guide you through the journey and offer help and support at any stage.

We have many years of industry experience and pride ourselves on our exemplary attitude and levels of service.

The bottom line is we enjoy building beautiful homes for Kiwi families. We're not a volume building company, we're a quality building company, and we'd love to make your dream home a reality.



WE ARE THE FAMILY
THAT BUILDS FOR
FAMILIES



Turn the page to see
examples from our
four plan series.





NIKAU SERIES

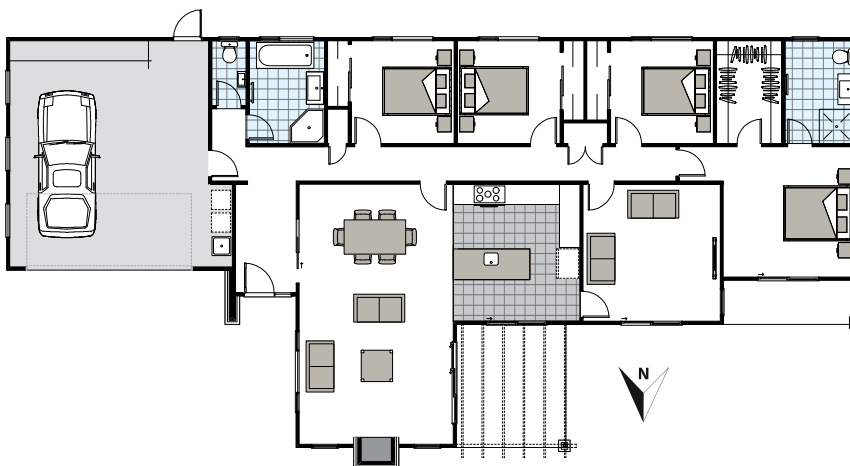
Designed for modern living on suburban sites, this series features multiple living spaces and relaxed indoor-outdoor flow.

NIKAU 209

This contemporary design has been conceptualised for north-facing homes and encapsulates everything a modern family needs.

209m²





4 	2 
2 	2 

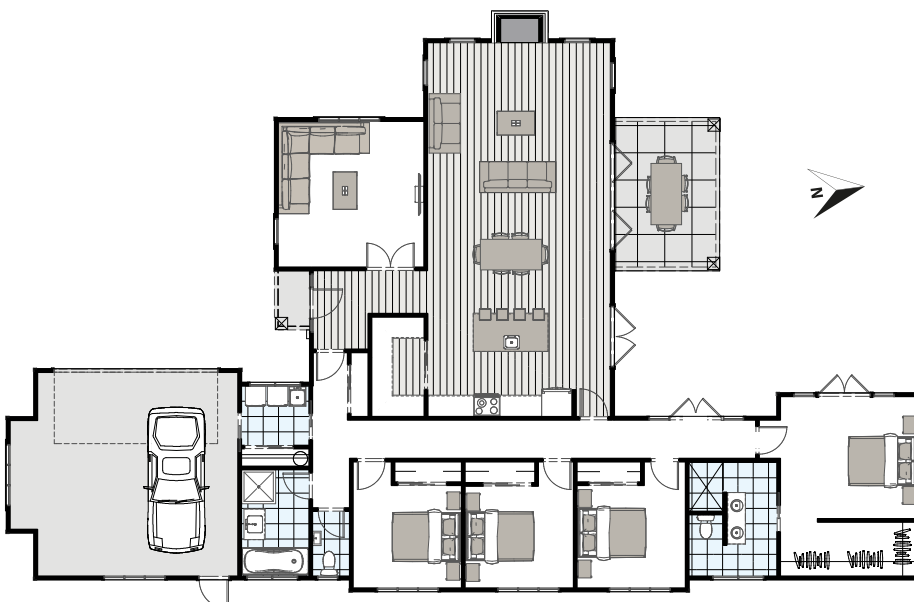


NIKAU 241

Traditional cladding and interiors are used to create a home that combines the comfort of contemporary building with a timeless feel.

241m²

4 	2 
2 	2 

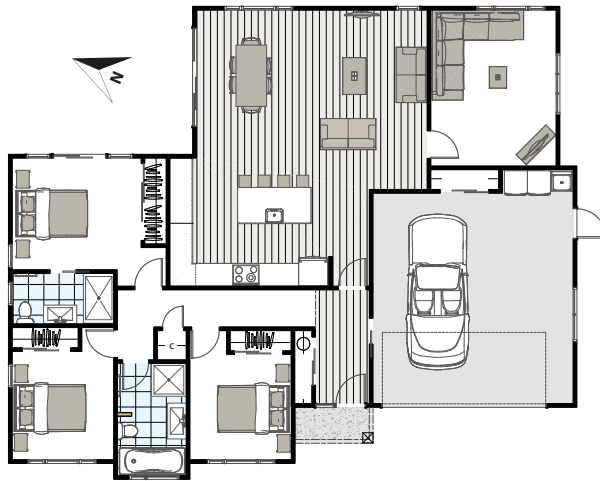


To see many more inspiring plans visit
IKONHOMES.NZ
or ask one of our
new home consultants

See back page for
contact details.

Ideal for smaller sites, the Kowhai series is perfect for first home buyers and those looking to downsize.

KOWHAI SERIES



KOWHAI 184

This home is ideal for small families and empty nesters. It features three bedrooms and two living spaces and is designed for day-long sun.

184m²

3 	2 
2 	2 



KOWHAI 198

Outdoor space is maximised in this double storey home. It features practical, quality exterior materials that require minimal maintenance.

198m²

4 	2 
2 	2 

Our plans are available in **EXECUTIVE, CONTEMPORARY & TRADITIONAL** exterior styles

See page 8 for details.



MATAI SERIES

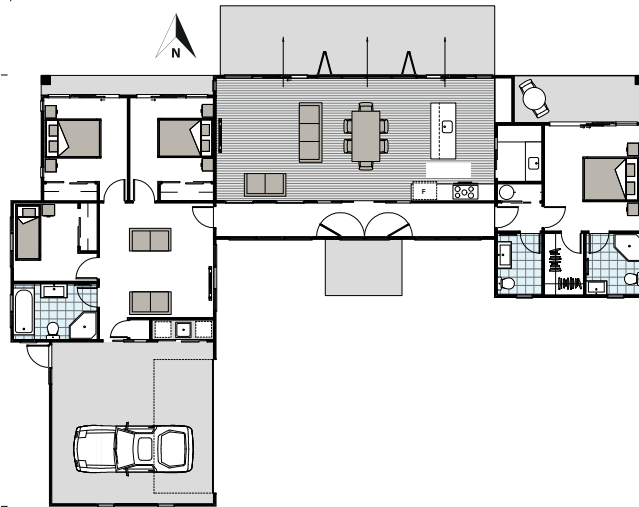
Suiting rural sites and larger sections, the Matai series features open plan living spaces, with expansive flow from indoors to outdoors.

MATAI 190

Character-filled with a modern yet rustic aesthetic, this Matai features natural wood products that blend seamlessly into any country setting.

190m²

4 	2 
2.5 	2 

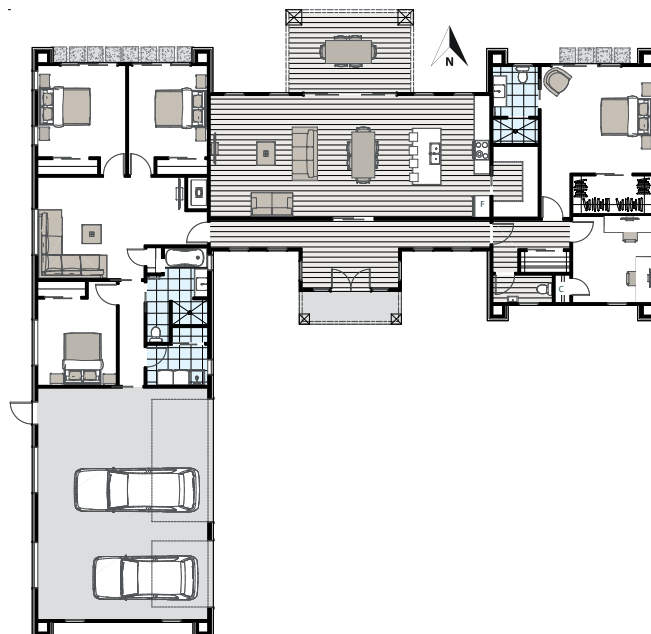


MATAI 297

Modern, sleek and durable, this design epitomizes the Kiwi dream home. Separate wings allow for multiple generations to live together in harmony.

297m²

4 	2 
2.5 	3 
1 	

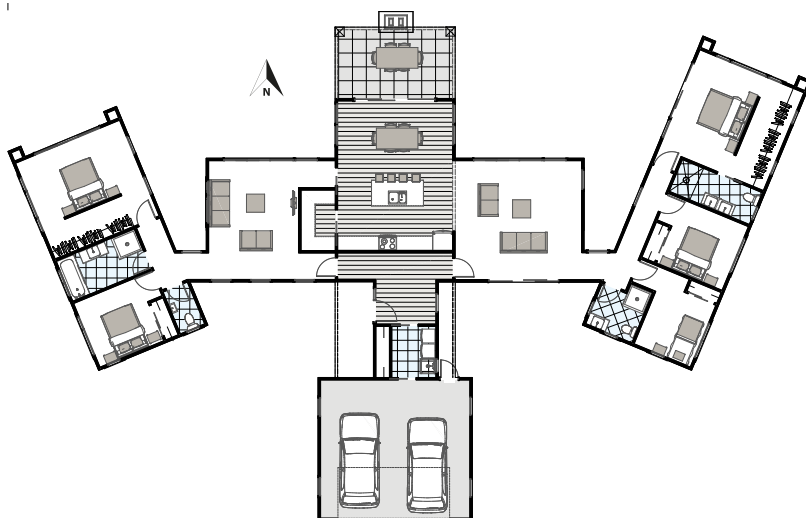


To see many more inspiring plans visit
IKONHOMES.NZ
or ask one of our
new home consultants

*See back page for
contact details.*

Beautiful and bold, the Pohutukawa series features a constantly evolving selection of contemporary designs.

POHUTUKAWA SERIES

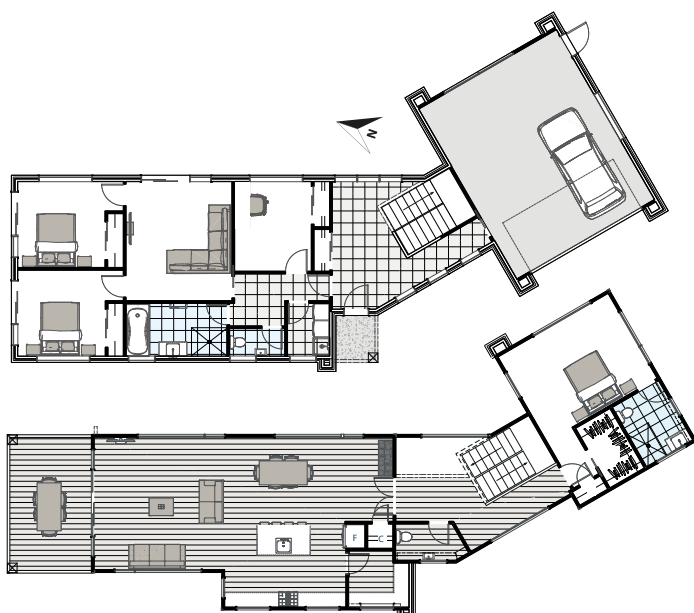


POHUTUKAWA 277

Created for the modern multi-family living, this home features separate wings that connect via expansive living spaces.

277m²

5 	2 
3 	2 



POHUTUKAWA 292

This bold, striking home has been designed for big views. Featuring a workshop, large garage and deck for alfresco dining, it's perfect for seaside living.

292m²

4 	2 
3 	2 

Our plans are available
in **EXECUTIVE,
CONTEMPORARY
& TRADITIONAL**
exterior styles

See page 8 for details.

EXTERIOR OPTIONS

Once you have established the best floor plan for your requirements, you can decide how you want your new home to look. The houses below have the same floor plan, but have been individualised with different cladding, roofing and detailing. Our three exterior options allow you to tailor a home to your tastes and let your imagination run free!

EXECUTIVE

With simple roof lines, metal tile roofing and maintenance-free claddings, this is our most economic option. The hard-working exterior cladding will save you time and money, and it's ideal for those looking to "lock and leave".



CONTEMPORARY

A modern, minimalist design with clean lines, this is a classic Kiwi home. It has mono-pitched roofs and a range of claddings, with raked ceilings an option on some designs.



TRADITIONAL

Gables, boxed corners, window facings and fretwork - this option is ideal for those who want to couple the historical look with hard-wearing contemporary materials.



OUR QUALITY SUPPLIERS

- ASL Fairview Windows
- Bosch Appliances
- Bunnings Trade
- Chester's
- Clearlite/Athena
- Cupolex
- Fisher & Paykel
- Flooring Studio
- Laser Plumbing
- Maximum Power
- Methven Tapware
- Metrotile
- Newtech
- Resene
- The Kitchen People
- Tile Warehouse
- Wardrobes Direct



BENEFITS OF BUILDING WITH IKON HOMES

- **NO FRANCHISE FEES**

We don't have to pay franchise fees, so can pass on the savings to you.

- **GREAT TESTIMONIALS**

We can show you testimonials from our very satisfied customers, who are happy to talk about their experience with Ikon Homes.

- **LOCALLY OWNED**

New Zealand owned and operated, Ikon Homes is here to support you.

- **SITE ASSESSMENT**

To assist you with your planning our staff can meet you on site to explore options.

- **OUR BUILDING PROCESS**

We have a detailed and comprehensive process, which results in a no-fuss build.

- **IDEAS AND INSPIRATION**

Bring your ideas and inspiration for discussion with our in-house designer.

- **COMPREHENSIVE QUOTATION**

All our quotations include a detailed specification list.

- **MINIMUM DEPOSIT**

Minimum build deposit of five per cent on signing with a further five per cent on issue of the building consent.

- **INTERIOR DETAILING**

Colour advice and product options courtesy of our interior designer.

- **SUPERIOR MATERIALS, FIXTURES AND FITTINGS**

We only use trusted, proven and high-quality suppliers and installers (see our suppliers list). All our homes come with a Master Build Premium Guarantee.

- **A FULL PACKAGE**

Professional support from start to finish.

- **A ROCK-SOLID BUILDING**

Ikon Homes are designed to impress, built to endure.

- **PROBLEM SOLVING**

Our solutions-focused team are on hand to offer advice throughout the entire building process.

MASTER BUILD
PREMIUM GUARANTEE
ON ALL BUILDS



KITCHENS

The kitchen is the heart of the modern home; a place where families gather, friends congregate and culinary masterpieces are created. Ikon Homes understands that the recipe for kitchen success differs from family to family, so we've created a range of pre-priced designs that cater for every requirement.

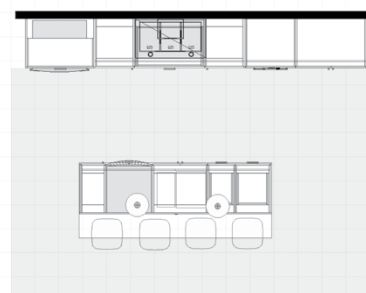
Featuring high-end appliances and waterproof timber overlay flooring, each kitchen represents the effortless marriage of functionality with contemporary style. These kitchens are designed to be easy care and clutter free, with plenty of storage, great lighting and hard wearing surfaces.

Whether you're a young couple who love to entertain, or a family with a tribe to feed, our designer will create the perfect kitchen for your needs.



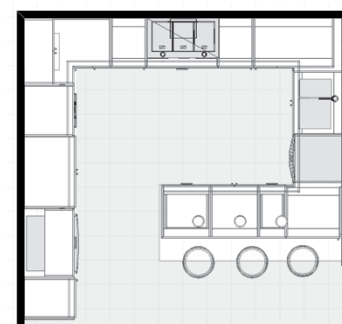
GALLEY WITH ISLAND

Galley kitchens are ideal for small homes as they take up minimal space. In this design an island bench has been used to open up the kitchen to the rest of the living space and create a more expansive feel.



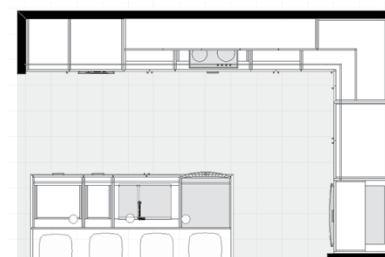
G-SHAPED

With loads of storage areas, this G-shaped kitchen also features a peninsula that can double as a breakfast bar. There's also lots of counter space, making it perfect for large families.



L-SHAPED WITH ISLAND

More bench and storage than a galley kitchen, this is an attractive option for those who like to share the cooking duties. There's plenty of space for all, and the island features bar-style seating.



SCULLERY KITCHEN

Essentially an L-shaped kitchen with island, one section of this kitchen's storage area is contained within a pantry. Great for culinary wizards who need floor-to-ceiling space for all their fancy ingredients.



BATHROOMS

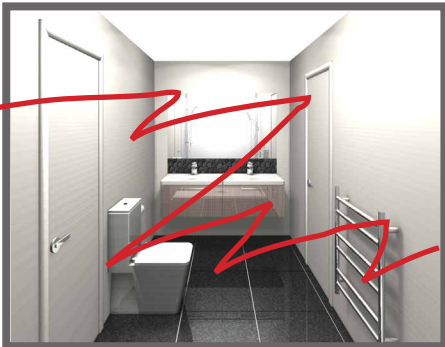
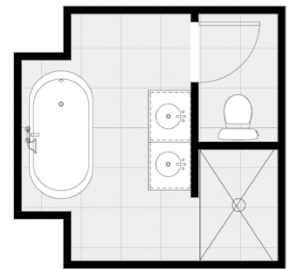
Bathrooms present an opportunity for design flair that incorporates your needs. Eminently practical, they also provide a place for pampering, rest and recuperation.

The bathroom is a part of the house where adding extra effort will beautify and maximize your comfort, space, and aesthetics. There are many style options when setting out a design for your bathroom. Our design team are here to help you create and optimise the bathroom space that best suits your budget, personality and vision. Here are 4 designs that will surely fascinate you.



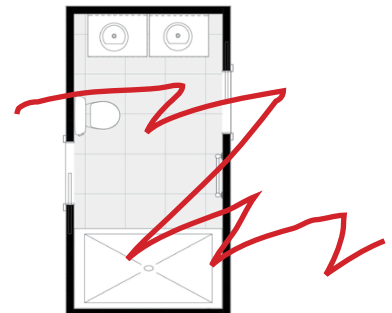
ULTIMATE LUXURY EN SUITE

A deep, round-edged bath surrounded by windows is the centrepiece of this luxurious room. Ideal for couples who love the finer things in life, this beautiful en suite also features a frameless shower, floating vanity with raised sink, and floor-to-ceiling tiles.



SPACE SAVING EN SUITE

When space is tight this design proves practical while giving opportunity to add your special touches to 'make it yours'. The tiled shower with frameless shower doors makes the space feel bigger and special tile features can add that 'wow' factor.



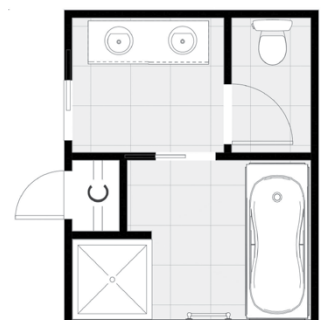
STANDARD LAYOUT WITH SEPARATE WC

The shower, bath and vanity are separated from the W/C (with additional vanity) in this practical bathroom. A perfect option for those who like to spend quality time soaking in the bath without interruption.

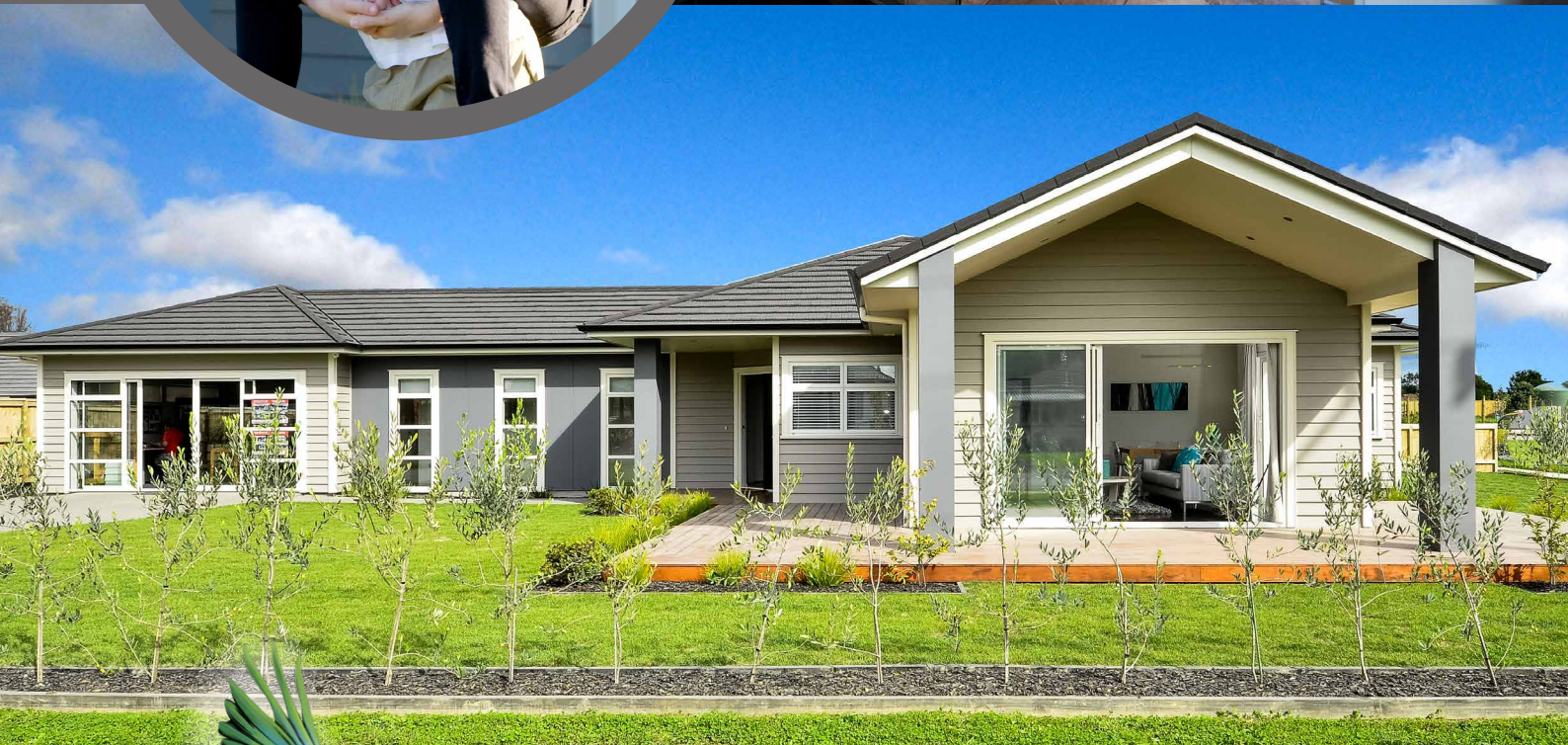


MULTI-TASKING BATHROOM

Great for families, this bathroom is sectioned off to allow for maximum privacy. The bath/shower, W/C, and sink area are contained in separate rooms, connected by locking doors.



DESIGNED TO IMPRESS BUILT TO ENDURE



IKONHOMES

P 0800 45 66 50 | E info@ikonhomes.nz | W ikonhomes.nz